



# WHS Tech Times

## How do students install the Respondus LockDown Browser?

How do students install the Respondus LockDown Browser?

1. Have students locate yellow File Explorer folder. (Figure 1)

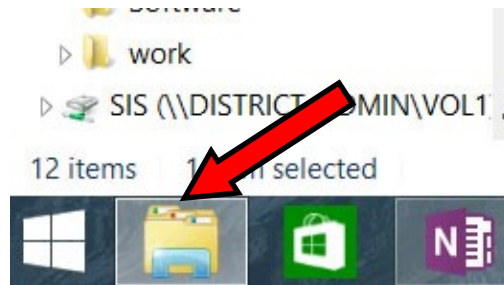


Figure 1.

2. Have students find ZENworks Adaptive Agent under Devices and drives. (Figure 2)

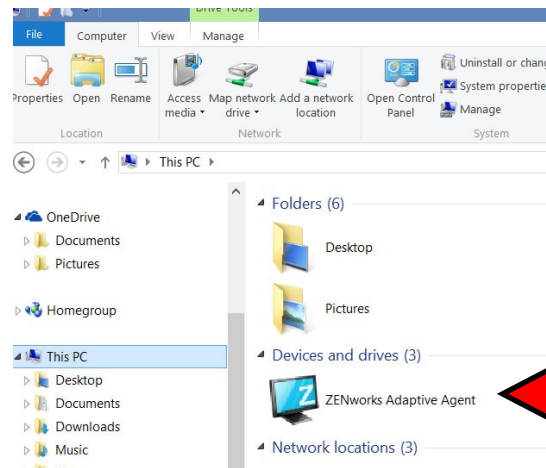


Figure 2.

3. Double click on ZENworks icon to open. (Figure 3)

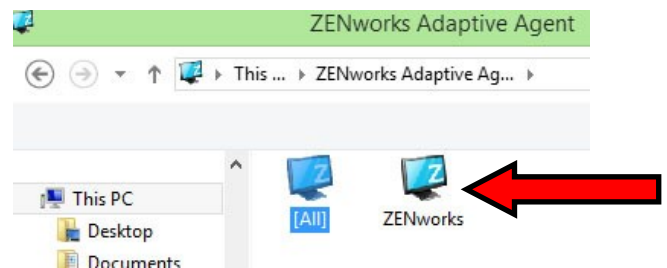


Figure 3.

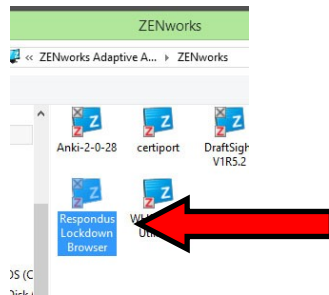


Figure 4.

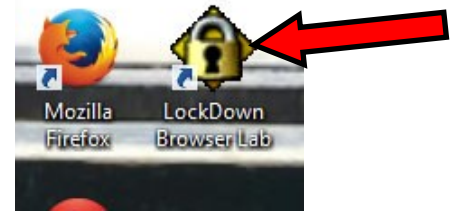


Figure 5.

4. Find the Respondus LockDown Browser Icon (**Figure 4**). Double click. It will begin a download process. Be patient.—It may take a while. After it is downloaded, an install button will appear on your screen. Click to install. You may have to click next, accept the agreement, click next if you need to and let it install. When it is finished click finish.

5. After it finishes, if any windows are still open, close them. Find the LockDown Browser icon on the desktop. When you double click the icon, it should take you to Wasatch Canvas. Log in as normal. (**Figure 6**).

For more help please contact your  
Tech Trainers

*Jason  
Theron  
Lynda*



Expect To Excel